
RSM/RSA Installation Guide for UMLMDA

Dieter Moroff

\$Revision: 1.4 \$

Table of Contents

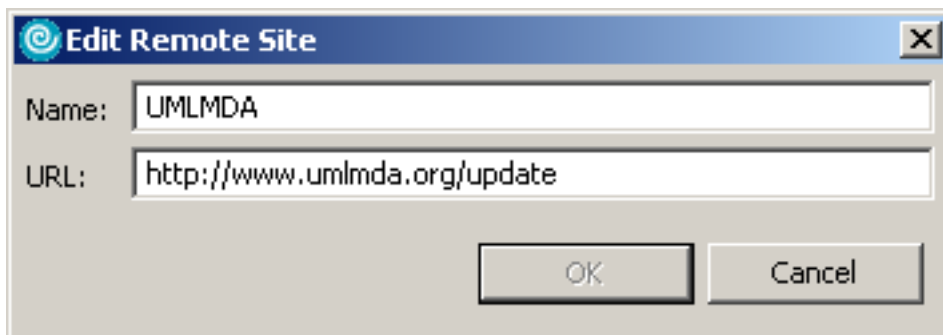
1. Installation	1
2. Known RSM Problems	3
2.1. Re-ordering Attributes	3
2.2. Setting Attribute Properties	3
2.3. Arranging Associations in Diagrams	3
2.4. Missing Eclipse IDE Functionality	3

This document describes how to install UMLMDA for IBM Rational Software Modeler/Architect (RSM/RSA). There is another document which describes the usage of UMLMDA with RSM/RSA to model services for a SOA environment.

1. Installation

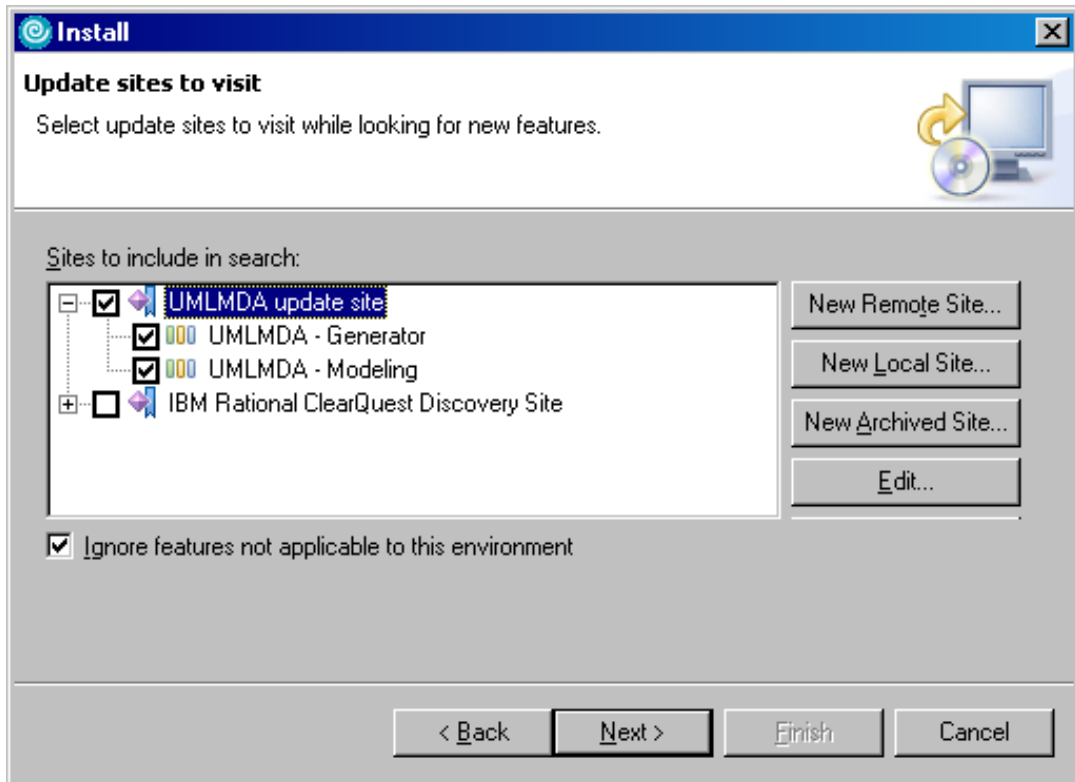
Use the update manager to install the UMLMDA plugins. To start the update manager, invoke Help|Software Update|Find and Install.... Choose "Search for new feature to install". Enter a new remote site. The URL is <http://www.umlmda.org/rsm/update>.

Figure 1. creating a new update site



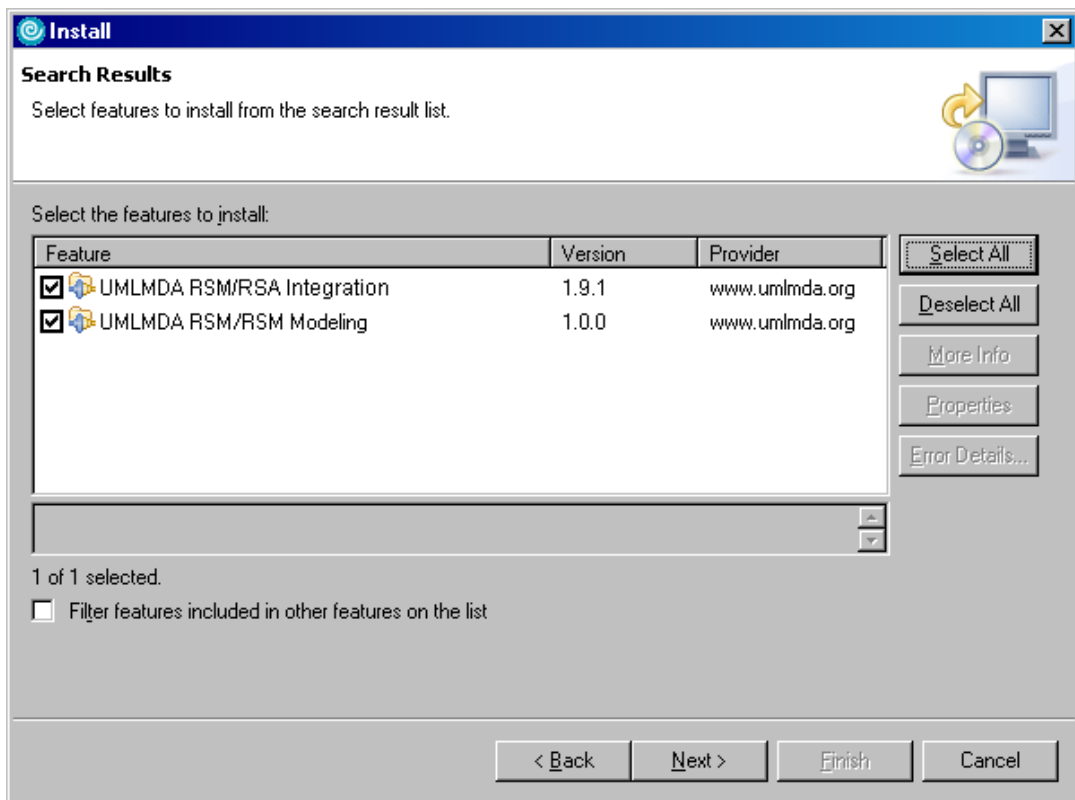
Specify which update sites should be checked for new features:

Figure 2. contents of the UMLMDA update site



Now select the features you want to install.

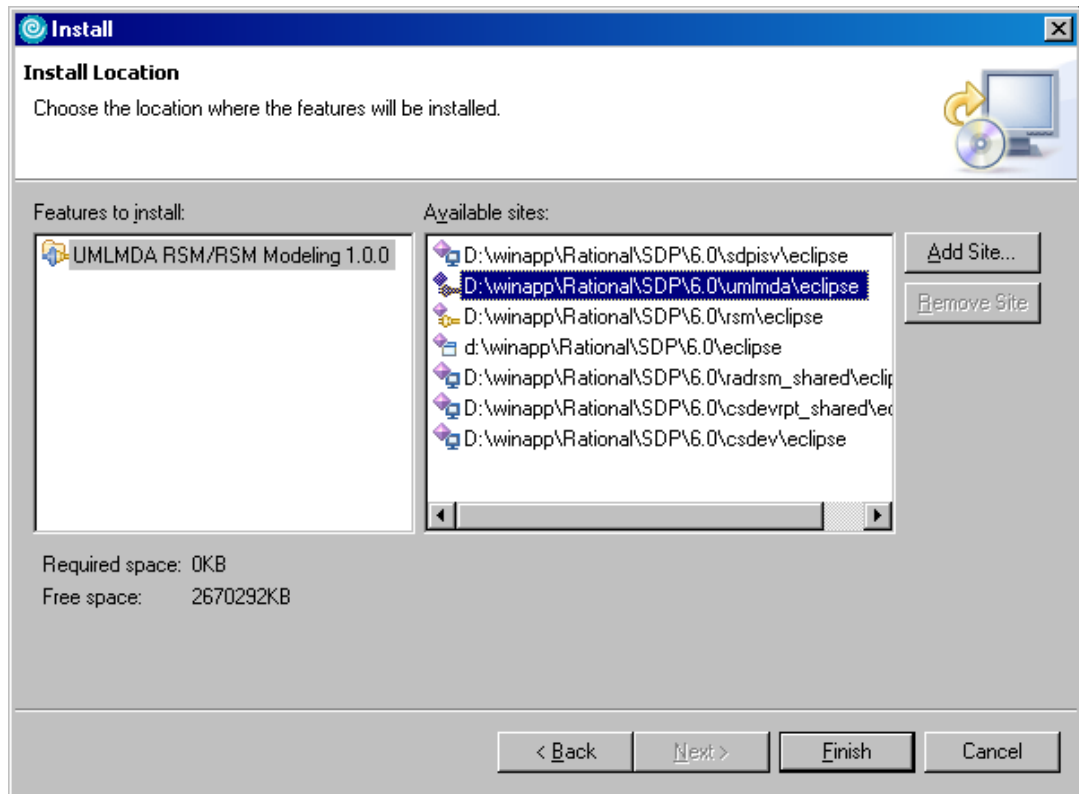
Figure 3. Feature selection in update manager



- Select UMLMDA RSM/RSA Modeling if you want to create models using the UMLMDA profile and UMLMDA primitive types.
- Select UMLMDA RSM/RSA Integration to use the UMLMDA generator.

After accepting the licence you have to specify the installation location. It is recommended to install the UMLMDA features into a directory separate from the other RSM/RSA features.

Figure 4. Specify install location in update manager



2. Known RSM Problems

2.1. Re-ordering Attributes

Ordering attributes via the context menu item Filters... | Sort/Filter Compartement Items | attributes corrupts the class diagram. In the next RSM session, the diagram is empty. *Workaround:* Drag the attributes to another class, then drag them back in the desired order.

2.2. Setting Attribute Properties

When modifying properties on multiple attributes (via multi selection), the changes are applied only to the first attribute. *Workaround:* change properties for every single attribute.

2.3. Arranging Associations in Diagrams

Dragging association lines in a diagram may cause the end points to change unexpectedly. RSM sometimes re-arranges associations, making a mess of the diagram layout. *Workaround:* use the default line layout where possible

2.4. Missing Eclipse IDE Functionality

RSM lacks the built in eclipse IDE functionality like Java online help, plugin documentation etc. Using RSM and eclipse on the same workspace may produce incorrect behaviour of both programs.
Workaround: Use Eclipse in a separate work space and transfer artefacts via CVS repository.